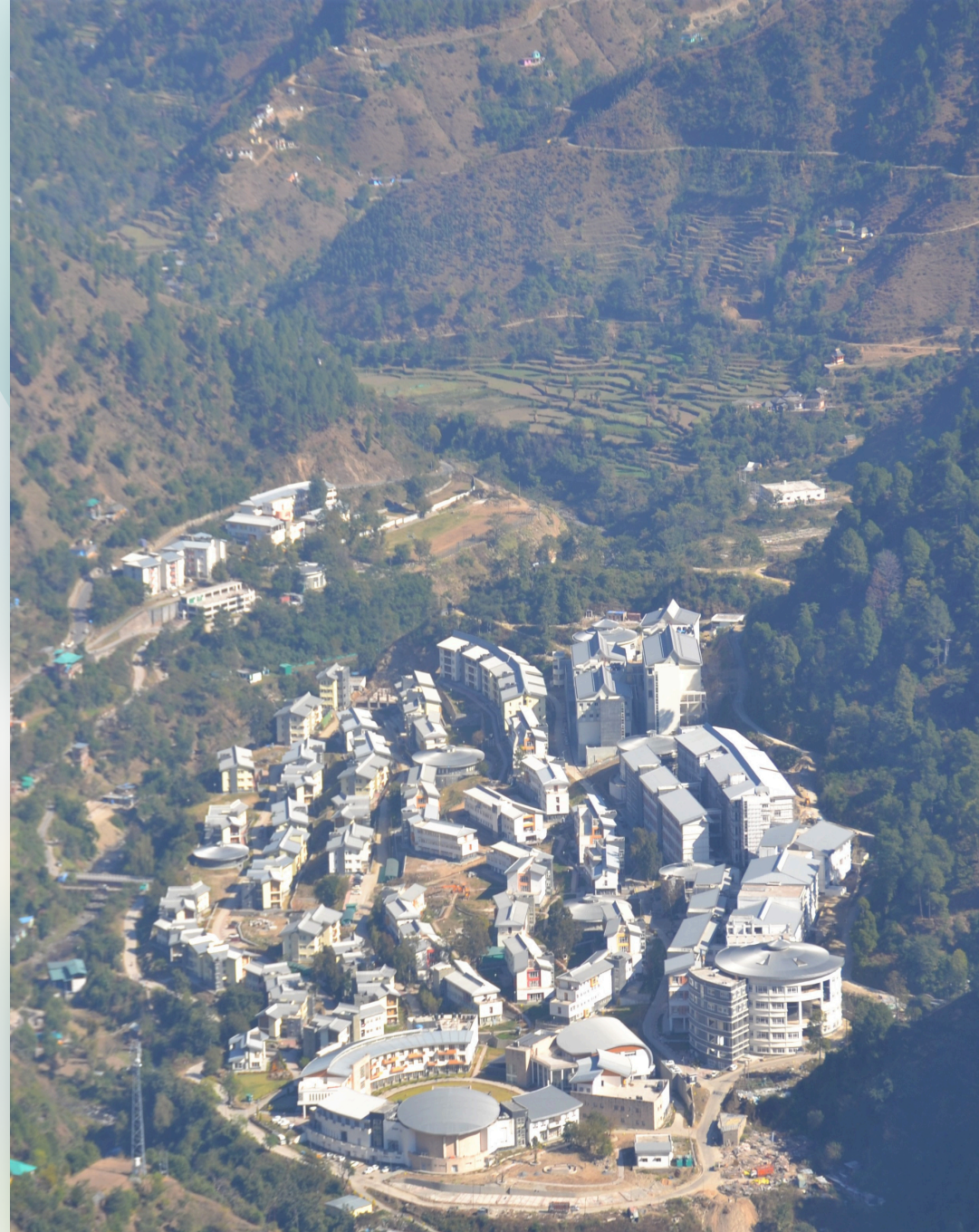


IIT MANDI

PLACEMENT BROCHURE

M.Tech. Structural Engineering 2025–26



INDIAN INSTITUTE OF TECHNOLOGY, MANDI

| Table Of Content

	Page
1. Director's Address	1-2
2. Chairperson's Address	3
3. Advisor's Address	4
4. About IIT Mandi	5
5. Faculty Advisor Address	6
6. About School	7
7. Demographics	8
8. About the Department	9
9. About the Course	10
10. Courses Offered	11
11. Labs and Facilities	12
12. Student Activities	13
13. Faculty	14
14. Our Recruiters	15
15. Placement Procedure	16
16. Contact Us	17



INDIAN INSTITUTE OF TECHNOLOGY, MANDI



| From the Director



Prof Laxmidhar Behera
Director, IIT Mandi

I am pleased to welcome you to IIT Mandi, which is located on the 538-acre picturesque river valley in the Shivalik Range. Since its inception in 2010, IIT Mandi has consistently worked to nurture professionals with industry-ready skills. We achieve this by periodically revising the curriculum in consultation with academic and industry experts to keep it relevant to the fast-changing global human resource needs. Academic excellence is our greatest strength. Students are introduced to practical learning with innovative pedagogy very early into the training. This ensures that they are better prepared to succeed in ambitious corporate environments. We provide a learning environment to allow individuals to express their passion and apply their innate abilities to solve real-world problems.

In the first year, the B.Tech. students participate in the Foundations of Design Practicum: Robotics and Reverse Engineering course which introduces them to existing engineering systems with hands-on experience. Design Practicum introduced in the second year to our B.Tech. students enables them to get exposure to real-world engineering problem-solving with interdisciplinary collaborations. With a budget of Rs. 25,000, award-winning projects include an intelligent drip irrigation system, a 3D printer, an autonomous garbage collector, etc. Socio-Technical Practicum introduced during B.Tech. 3rd year provides exposure to the impact of new technologies on society, often doing fieldwork in villages and towns in the neighborhood. Typical projects include alleviating traffic congestion in Mandi town, mechanization in terraced farms in the Himalayas, and education and livelihood for village women. These interdisciplinary and group projects build up perseverance, leadership, connection with society, and the opportunity to apply their technical skills.

The M.Tech. and M.Sc. degree programs contain a substantial component of thesis work relying heavily on practical learning aspects for over two semesters. In this open-ended thesis, students learn to work independently and in great depth on a research problem. The thesis contains globally novel contributions to the discipline in some aspects. Thus, the Master's graduates are well suited to take a lead role. The institute also encourages the student to explore collaboration and to work on projects guided by industry experts for their thesis. Research by our MS and Ph.D. students has achieved global recognition in international journals and conferences.

Continued on next page...

| From the Director

In addition, the diaspora of student-driven extracurricular activities creates a lively learning environment and provides leadership abilities and confidence in our students. All this is impossible without the support of our able faculty, who give a holistic learning experience with their excellent teaching and exposure to cutting-edge research and publication in the best international scholastic journals. We have a total faculty strength of 189 active in research and teaching in several areas of engineering, sciences, and the humanities. Faculty have received research grants totaling over Rs. 160.7 crores and the Institute has invested heavily in developing state-of-the-art lab infrastructure. Our faculty members are also involved in mentoring startups supported by our Technology business incubator, IIT Mandi Catalyst. The IIT Mandi Catalyst supported 460+ startups and disbursed about INR 20+ crores for prototyping and commercialization of diverse start-ups in clean energy, environment, health care, agriculture, enterprise management, biotech, education, manufacturing, and consumer internet. The fact that about 37 of the total start-ups have been founded by the IIT Mandi faculty, staff, and students underlines the innovative and entrepreneurial spirit of IIT Mandi once again.

The IIT Mandi alumni have done extremely well, as evident from receiving the youngest scientist award in the Indian Science Congress, INYAS award, etc. Our current alumni strength is over 1513 B.Tech, 114 MS, 509 M.Tech, 392 MSc, 48 MA, and 8 I-Ph.D., and 288 Ph.D. graduates. Our alumni have excelled in different spheres of academia, industry, and central government administration, thanks to our innovative curriculum. Most of these alumni have been hired by top multinational companies, a few have chosen higher studies in leading universities and several of them are serving different administrative positions in the Govt. of India including IAS.

On behalf of the faculty and students of IIT Mandi, I invite you to participate in our placement process. I am confident that you will find it a rewarding experience!

Prof. Laxmidhar Behera
Director, IIT Mandi

| From the Chairperson



Dr. Rajneesh Sharma

Chairperson, SCEnE, IIT Mandi

It is a great pleasure to welcome you to School of Civil and Environmental Engineering (SCENE), IIT Mandi. Although the school is very young, but in the short span, we have built our reputation in developing the best technologies related to Civil Engineering in the country. We are one of the top competitive destinations for B.Tech., M.Tech. and Ph.D. students across India. With multidisciplinary faculty, we provide high quality of teaching and research. We believe in having an interdisciplinary approach for societal problems. In the serene atmosphere of the Himalayas, we provide a very calm, peaceful, soothing, pollution free and supportive environment to our faculty and students so that they can excel in their career to the fullest of their potential. The School has a strong focus on in the research areas of disaster management especially with an interdisciplinary approach involving Structural Engineering, Geotechnical Engineering, Water Resources Engineering, Environmental Engineering and GIS & Remote sensing. We have a strong alumni network. We take great pride in success of our alumnus. Both our undergraduate and postgraduate programs have high placements rates in the best organizations globally. In short, we aim to produce world class engineers and researchers for the benefit of society and the nation.

Dr. Rajneesh Sharma
Chairperson, SCEnE

| From the Placement Advisor



Dr. Kala Venkata Uday

During the short span of fourteen years of its existence, the Indian Institute of Technology Mandi (IIT Mandi) has gained a reputation for its cutting-edge research and innovative teaching programs focusing on up-to-date scientific knowledge and state-of-the-art technological know-how in their respective disciplines. The institute prides itself on creating an environment that empowers young minds by developing intellect, and versatility, broadening horizons of creativity and honing interpersonal skills with the help of our top-notch faculty and staff. With the aim of shaping the students into responsible engineers and scientists, the innovative curriculum at IIT Mandi strives to expose students to strong fundamentals of engineering, basic sciences, and humanities while simultaneously sensitizing them to human values and society. Similarly, the institute's focus on research at the fore-fronts of various areas of science and technology has resulted in significant contributions and responsible researchers.

Apart from the technological development of our students, they also participate/organize in a multitude of extra-curricular activities, which exposes them to and tests their skills in sports, culture, dramatics, and music and allows them to develop a healthy overall personality. This has brought several awards to the institute at national and international levels. The students also get first-hand experience in organizing and managing events through various leadership positions they take up during several annual events organized at IIT Mandi.

The Career and Placement Cell (CnPC) invites organizations that have recruited our alumni and have witnessed them deliver well on high expectations placed on them, as well as those whom our students have not yet got an opportunity to serve. The CnP cell strives to facilitate the best possible match between the aspirations of recruiting organizations and the abilities of our students. We welcome suggestions from your organization that will help us realize it. On behalf of the CnPC team at IIT Mandi, I assure you of the prodigious talent of our students and feel elated to invite your esteemed organizations to recruit our students. We look forward to the enthusiastic participation of your organization in our 2023-2024 campus placement process and a lasting and mutually satisfying relationship with your organization.

Dr. Kala Venkata Uday
Faculty Advisor



| About IIT Mandi

Indian Institute of Technology, Mandi is a premier public technical and research institute located in the Mandi district of Himachal Pradesh. It was established in 2009 and is recognized as an Institute of National Importance under the Institutes of Technology (Amendment) Act passed by the Indian Parliament in 2012. It imparts to its students a world-class education, a plethora of opportunities to pursue and excel in all kinds of fields and research, and an extraordinary campus life to cherish forever. It's a prestigious and picturesque campus at the foot of the Himalayas.

The institute boasts state-of-the-art infrastructure, excellent campus facilities for all residents and a highly sophisticated array of laboratories and research facilities to support cutting-edge research and scientific pursuits. All these elements come together and mold students into highly competent professionals, technocrats, and leaders of the world.

| From the Faculty Advisor



Dr. Subhamoy Sen

As the Faculty Advisor for the M.Tech program in Structural Engineering at IIT Mandi's School of Civil and Environmental Engineering, I take great pride in showcasing the remarkable capabilities of our students. Our graduates stand out not only for their strong foundation in technical and analytical skills, but also for their drive, creativity, and leadership potential. Time and again, they have delivered excellence—both academically and practically—through impressive performances in coursework, research endeavors, and industry internships.

At SCENE, we are deeply committed to providing a dynamic and holistic learning environment that fosters both intellectual growth and hands-on expertise. Our program emphasizes interdisciplinary learning, blending advanced research with practical applications. With globally recognized faculty members leading the way, students are guided through challenging curricula and transformative research experiences—preparing them to solve real-world problems in structural engineering.

Our educational ecosystem is further enriched by robust industry tie-ups, international research opportunities, and cutting-edge laboratory infrastructure. These elements collectively enhance the learning journey and empower our students to excel. The achievements of our alumni in leading academic and industry roles serve as a proud reflection of our dedication to excellence. I am confident that our students will continue to drive innovation and make meaningful contributions to the civil engineering profession, both in India and beyond.

Dr.Subhamoy Sen
Associate Professor
School of Civil and Environmental Engineering (SCENE)
IIT Mandi

School of **Civil and Environmental Engineering**



Vision

To pioneer excellence in academics, research, and innovations for sustainable and climate-resilient infrastructure development with a focus on the built environment, livelihood, and disaster risk reduction for societal benefit.

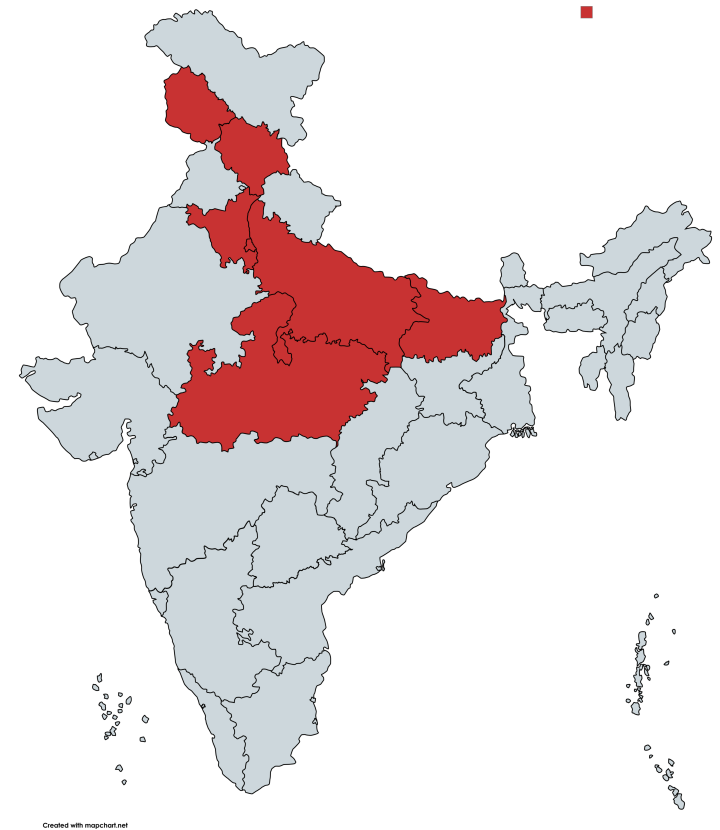
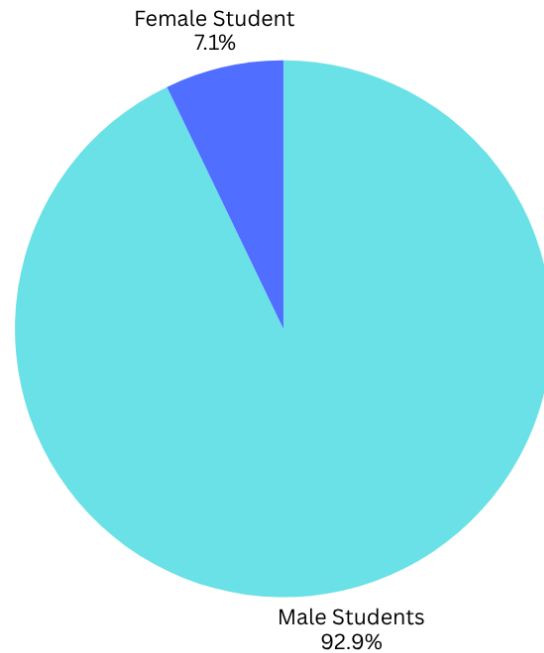
Mission

- Multidisciplinary and holistic teaching and learning to achieve global standards in skill and research development towards self-reliant nation
- Developing innovative and sustainable solutions for resilient infrastructure with specific focus on mountain hazards
- To develop socio-techno-economic-green solutions to alleviate climatic and anthropogenic catastrophes
- To imbibe flexible, critical, creative and ethic centered principles in the education and research process

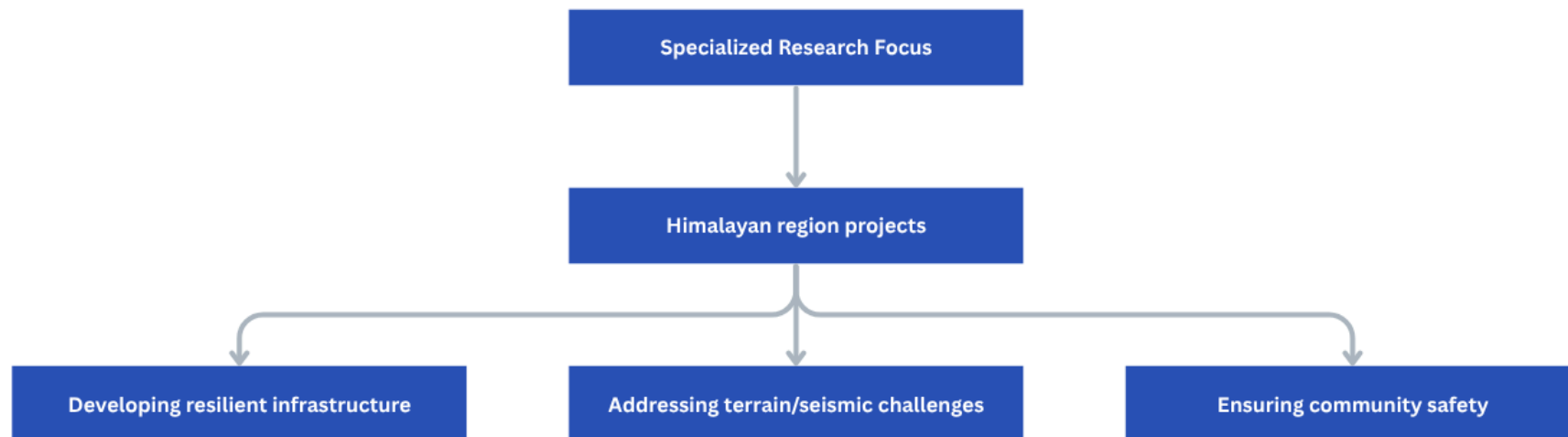
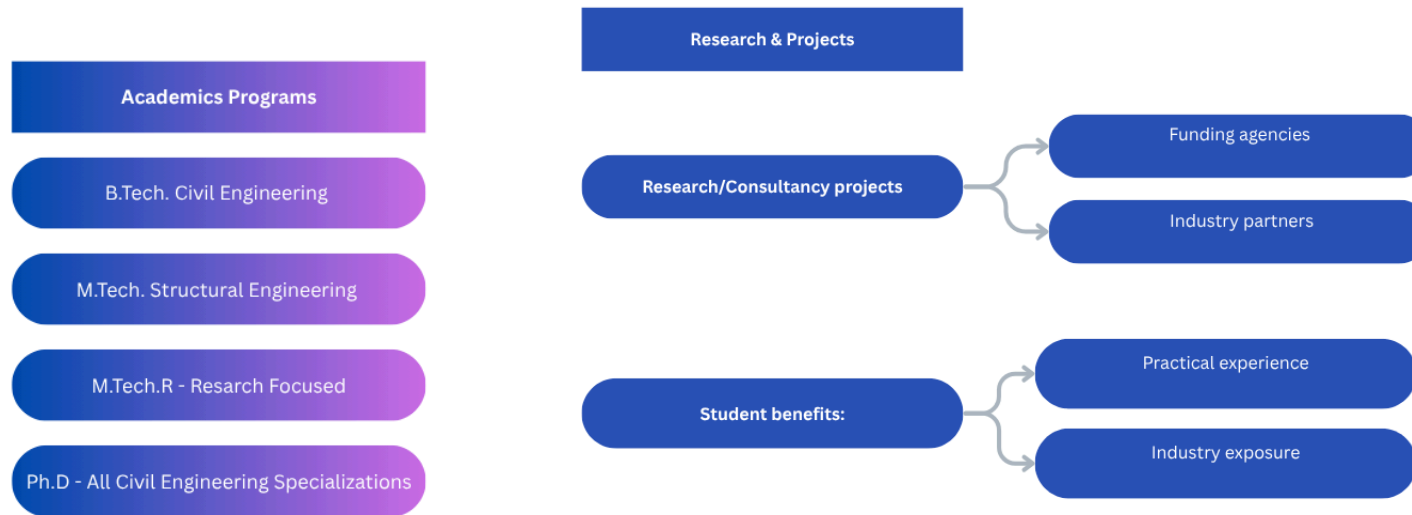
| Demographics



Demographics - M.Tech. Structural Engineering



About the Department



About the Course

The M.Tech. curriculum of Structural Engineering at IIT Mandi aims to provide the students with a comprehensive and insightful understanding of the principles and best industrial practices, with a particular focus on structural analysis, design, and construction to ensure the safety, stability, and reliability of the structures under the effects of service loads and extreme loads such as earthquakes, blast, winds, floods, among others. The Structural Engineering program at IIT Mandi prepares students for taking up the challenging projects in the field of buildings, bridges, towers, dams, and other infrastructure systems in future.

Key Aspects

Analysis & Design of structures

Concrete technology

Building Codes & Regulations and Construction Supervision

Earthquake Engineering

Bridge Engineering

Innovative & Sustainable Design



| Courses Offered

Discipline Core

Advanced Solid Mechanics

Advanced Design of Structures

Structural Dynamics with Application to
Earthquake Engineering

Finite Element Methods for Engineers

Structural Engineering Laboratory

Numerical Methods for Engineering
Computation

Outer Discipline Elective

Fundamentals of Fracture Mechanics

Hydro Informatics

Discipline Elective

Analysis and Design for Earthquake - Resistant
Structures

Bridge Engineering

Structural Health Monitoring

Concrete Technology

Mechanics of Composite Materials

Prestressed Concrete Structures

Slope Stability and Retaining Structures

Uncertainty Analysis in Civil Engineering



| Labs & Facilities

Research Laboratories

Multi-Hazard Resilient Infrastructure Systems
(MH-RESIST)

Structural Dynamics and Uncertainties
research Group (STUDENTrg)

i4S Lab

Sigma HVR

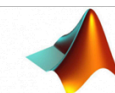
MH-AID



STUDENT's SKILLS



AutoCAD



MATLAB

Teaching Laboratories

Advanced Structural Engineering Lab

Construction Materials Lab

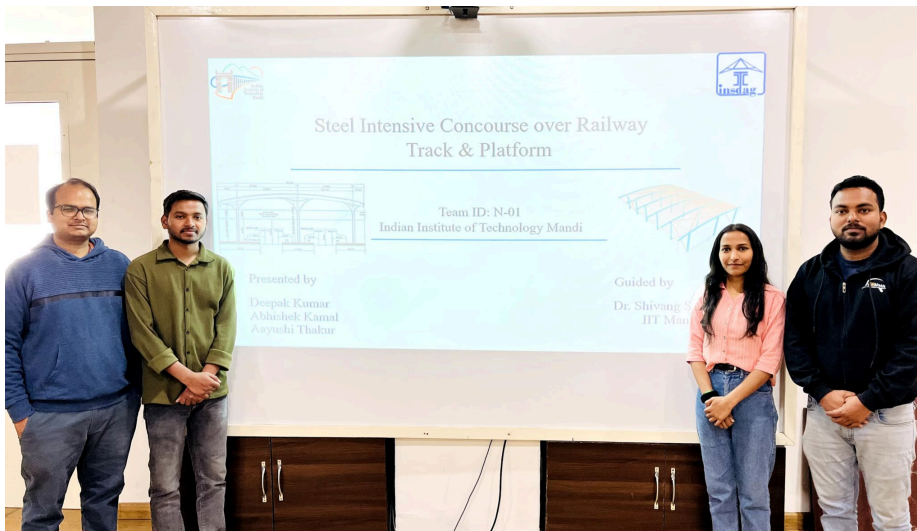
Structural Analysis Lab



Student Activities

The Structural Engineering department at IIT Mandi is defined by action. We champion a culture of practical application, best exemplified by our inaugural **Annual Civil Engineering Symposium (ACES 1.0)**. This student-organized event was a resounding success, offering a platform for innovation through competitions like live Shake Table Tests and insightful Poster Presentations.

This drive to excel is reflected in the outstanding achievements of our students. One of our student recently distinguished our department on a national level, securing multiple victories in high-stakes competitions hosted by institutions like IIT Roorkee. The crowning achievement was winning first place in the national INS DAG competition, standing out among hundreds of participating institutes. This proves that our students possess the cutting-edge skills and competitive edge to tackle real-world challenges and emerge as leaders in their field.



| Faculty



Dr. Subhamoy Sen

Associate Professor



Dr. Maheshreddy Gade

Associate Professor



Dr. Rajneesh Sharma

Associate Professor



Dr. Kaustav Sarkar

Associate Professor



Dr. Sandip Kumar Saha

Associate Professor



Dr. Shivang Shekar

Assistant Professor



Dr. Shashank Pathak

Assistant Professor



Dr. Dhanya Jaya

Assistant Professor



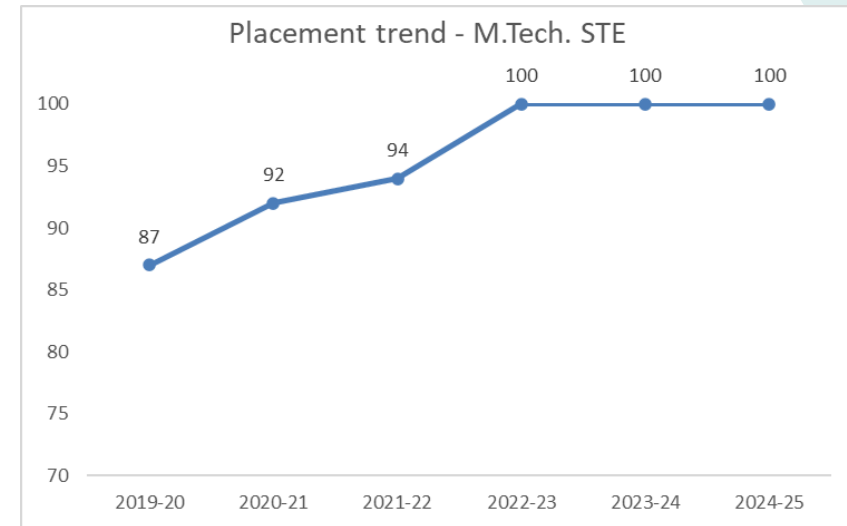
Dr. Thanswemong Chowdhary

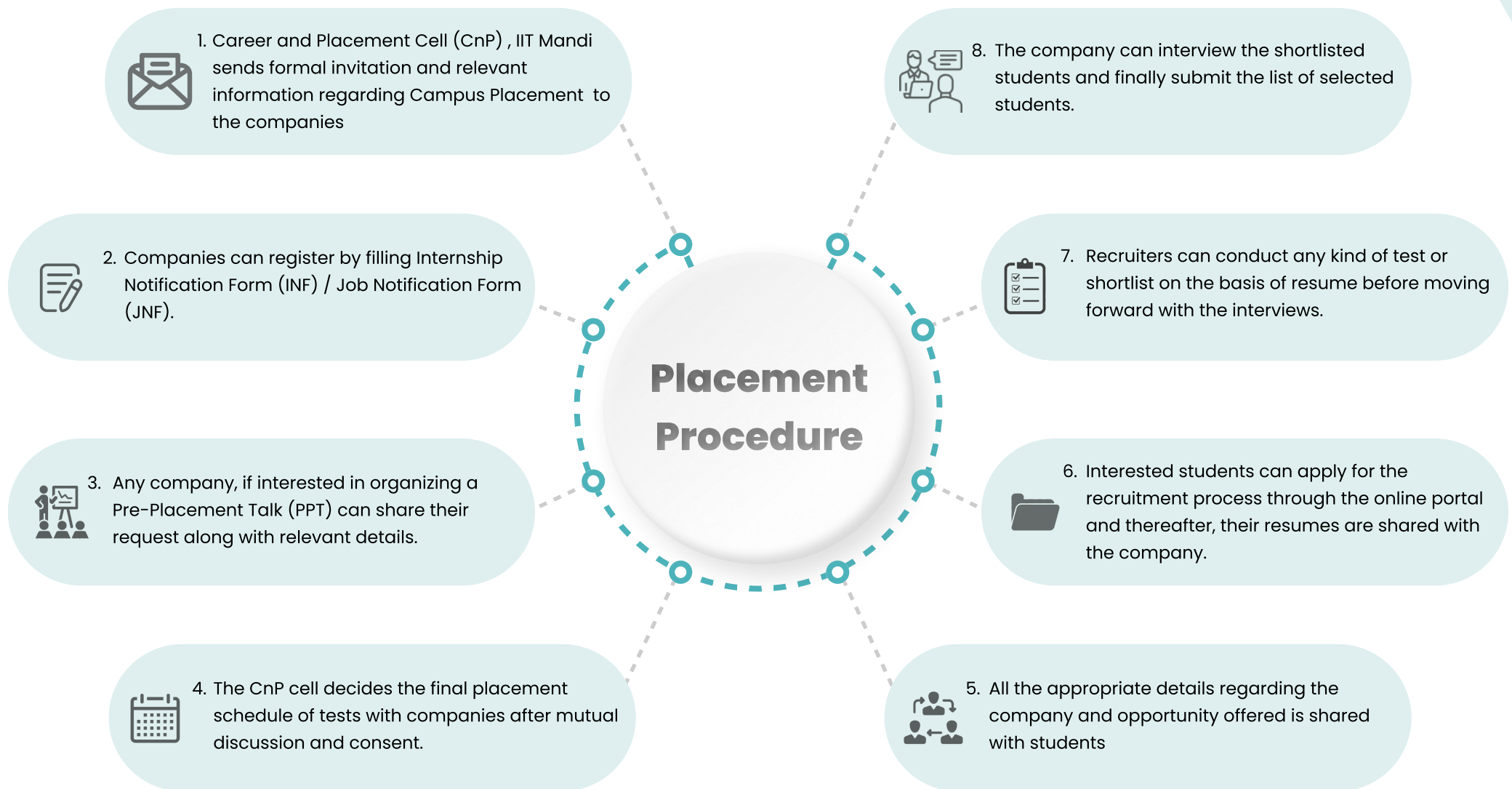
Assistant Professor

| Past Requirters

We are thrilled to announce that our department has been achieving remarkable milestones including 100% placements. This outstanding accomplishment is a testament to the dedication and hard work of our students, the unwavering support of our faculty, and the strong partnerships we have cultivated with top industry leaders.

Few Regular Recruiters:





| Contact Information

CAREER AND PLACEMENT CELL

Indian Institute of Technology, Mandi

Himachal Pradesh – 175005, India

placement@iitmandi.ac.in | +91-1905-267006

CAREER AND PLACEMENT FACULTY ADVISOR

Dr. K. V. Uday

advisorchnp@iitmandi.ac.in

FACULTY ADVISOR, TRAINING AND INTERNSHIP

Dr. Rahul Shreshtha

advisor_tni@iitmandi.ac.in

Faculty Advisor (SCEnE)

Dr. Subhamoy Sen

ASSOCIATE PROFESSOR

subhamoy@iitmandi.ac.in

STUDENT PLACEMENT COORDINATOR

Poorvi Singh

T24010@students.iitmandi.ac.in

+91-6265553762

Ahmed Umar

T24016@students.iitmandi.ac.in

+91-8825830010